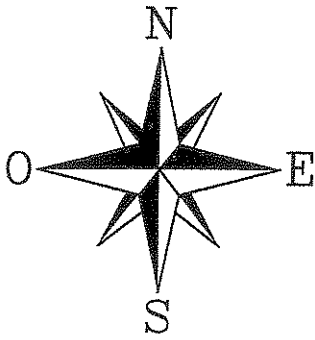
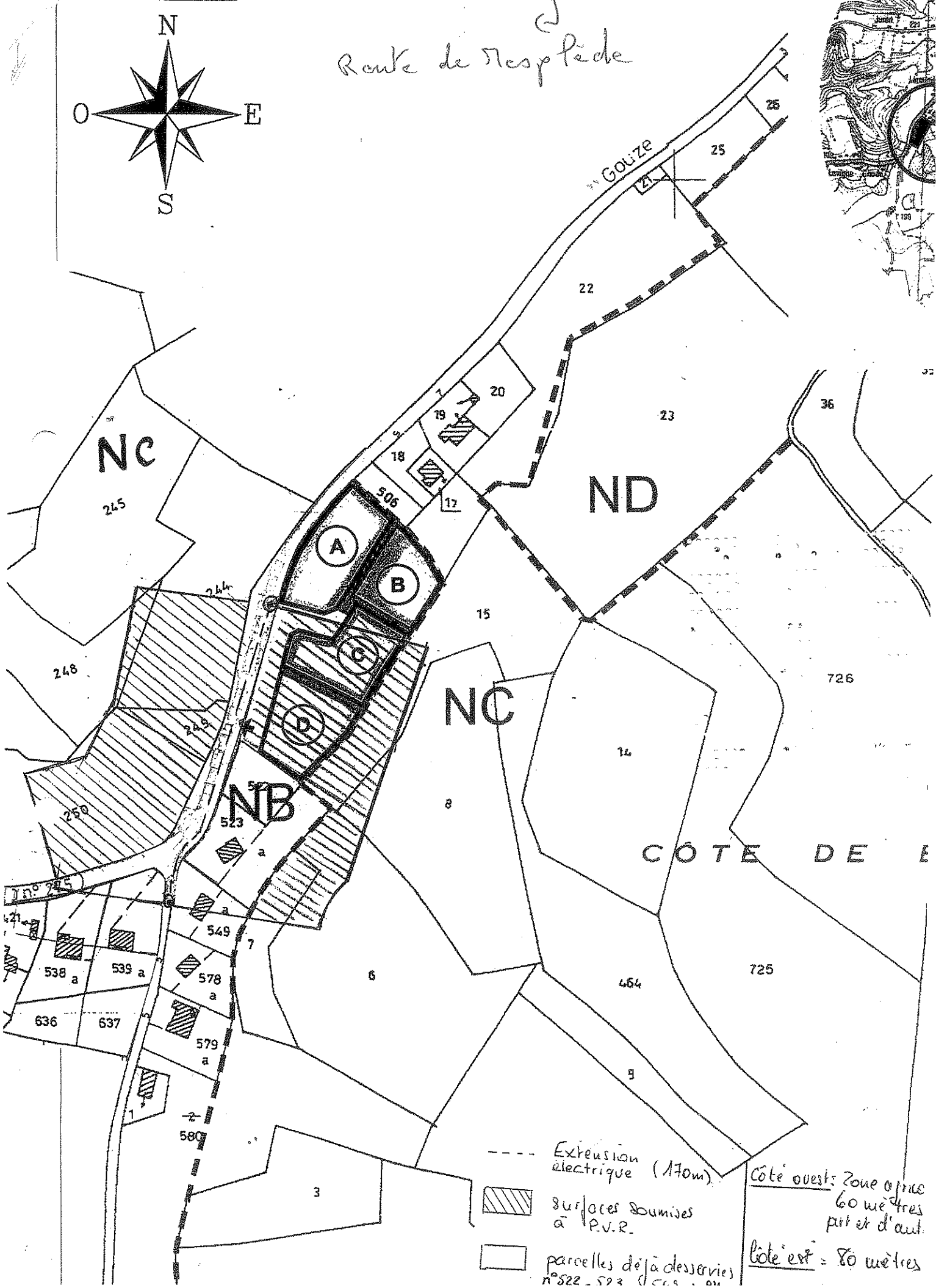
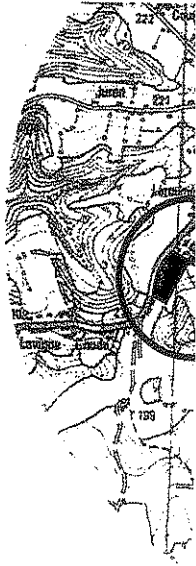


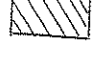

échelle 1/2500^e

ARTHEZ DE BEARN



Route de Nespède



- Extension électrique (170m)
-  surfaces soumises à P.V.R.
-  parcelles déjà desservies n° 522 - 523 (cases ou)

Côté ouest: Zone a plus 60 mètres pit et d'aut.
Côté est = 80 mètres